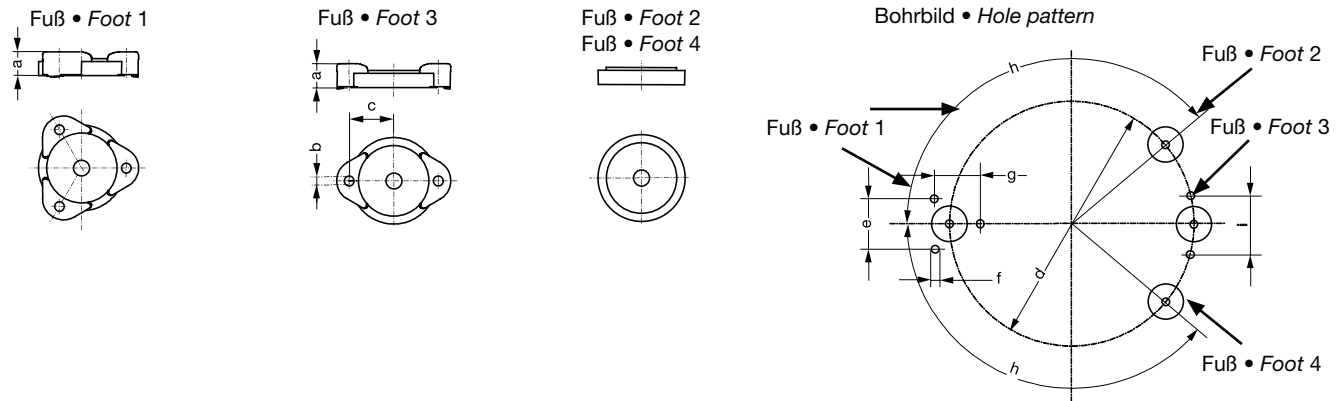


Befestigungselemente für 2BH1 943 (1 Satz = 4 Befestigungselemente)

Fixing clamp for 2BH1 943 (1 set = 4 fixing clamps) [mm]

2BX2 124

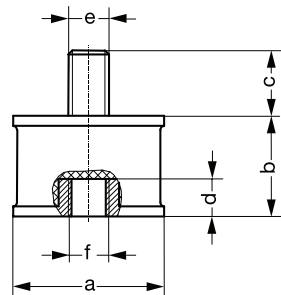


Typ • Type	a	b	c	d	e	f	g	h	i
2BX2 124	26	∅ 10	83	490	86,6	M8	75	120°	100

Federelement (Füße) 1 Satz für senkrechte/waagrechte Aufstellung

Rubber buffer (feet) 1 set for vertical/horizontal mounting [mm]

- 2BX2 120
- 2BX2 121
- 2BX2 122
- 2BX2 123
- 2BX2 127
- 2BX2 128
- 2BX2 135
- 2BX4 100
- 2BX4 101
- 2BX4 102
- 2BX4 103
- 2BX4 104



Typ • Type	a	b	c	d	e	f	Typ • Type	a	b	c	d	e	f
2BX2 120	∅ 25	20	10	6	M6	M6	2BX4 100	∅ 25	20	10	6	M6	M6
2BX2 121	∅ 30	20	13	7,5	M8	M8	2BX4 101	∅ 30	20	13	7,5	M8	M8
2BX2 122	∅ 50	30	15	10	M10	M10	2BX4 102	∅ 50	30	15	10	M10	M10
2BX2 123	∅ 75	40	17,5	10,5	M12	M12	2BX4 103	∅ 75	40	40	10,5	M12	M12
2BX2 127	∅ 35	45	11	8	M6	M6	2BX4 104	∅ 75	40	40	10,5	M12	M12
2BX2 128	∅ 35	45	11	8	M8	M8	2BX4 105	∅ 50	30	30	12	M12	M12
2BX2 135	∅ 25	44	10	5,8	M6	M6							

90° Bögen

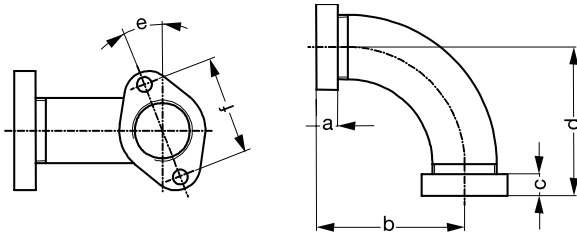
90° elbow [mm]

2BX4 313

2BX4 314

2BX4 315

2BX4 319



Typ • Type	a	b	c	d	e	f
2BX4 313	14	96,5	14	98,5	21,5°	64
2BX4 314	14	106,5	14	106,5	18°	75
2BX4 315	16	131,5	16	131,5	23,5°	85
2BX4 319	22	122	22	122	0°	150